

Lower Colorado River Authority

City of Horseshoe Bay

July 21, 2022

John Hofmann

Executive Vice President, Water

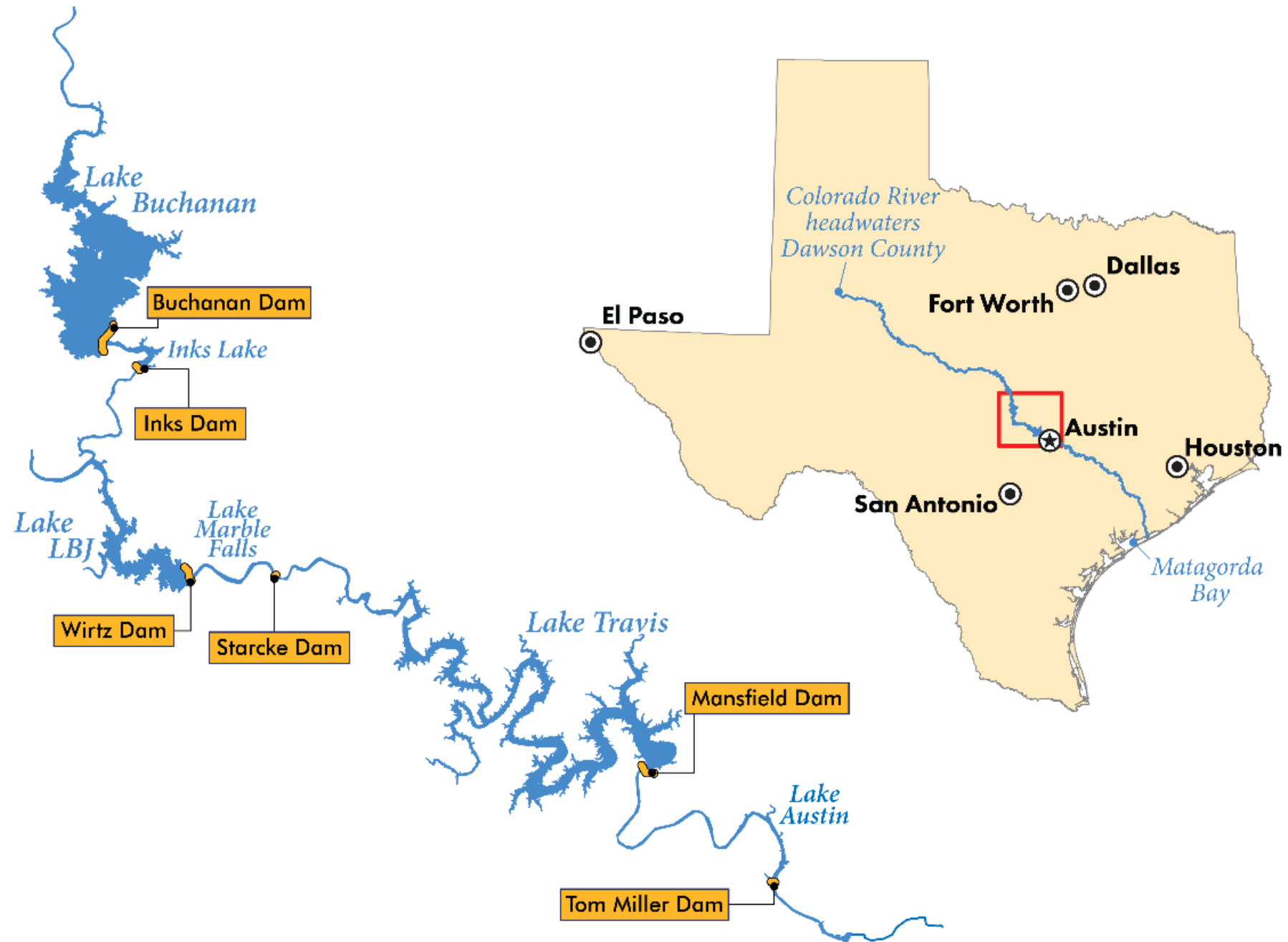


Current Condition: Severe Drought

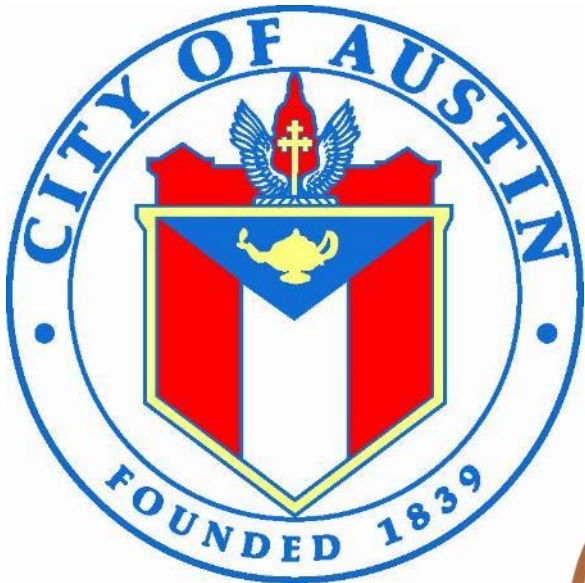
- **Lakes Buchanan and Travis: 60% full, 1.2 million acre-feet**
- **Lakes capture water during wet times for use during dry times**
 - Lakes designed to fluctuate



The Highland Lakes Portion of the Colorado River



Some LCRA Firm Water Customers



Travis County
Water Control and
Improvement District #18

Water Supply Reservoirs

Lake Buchanan



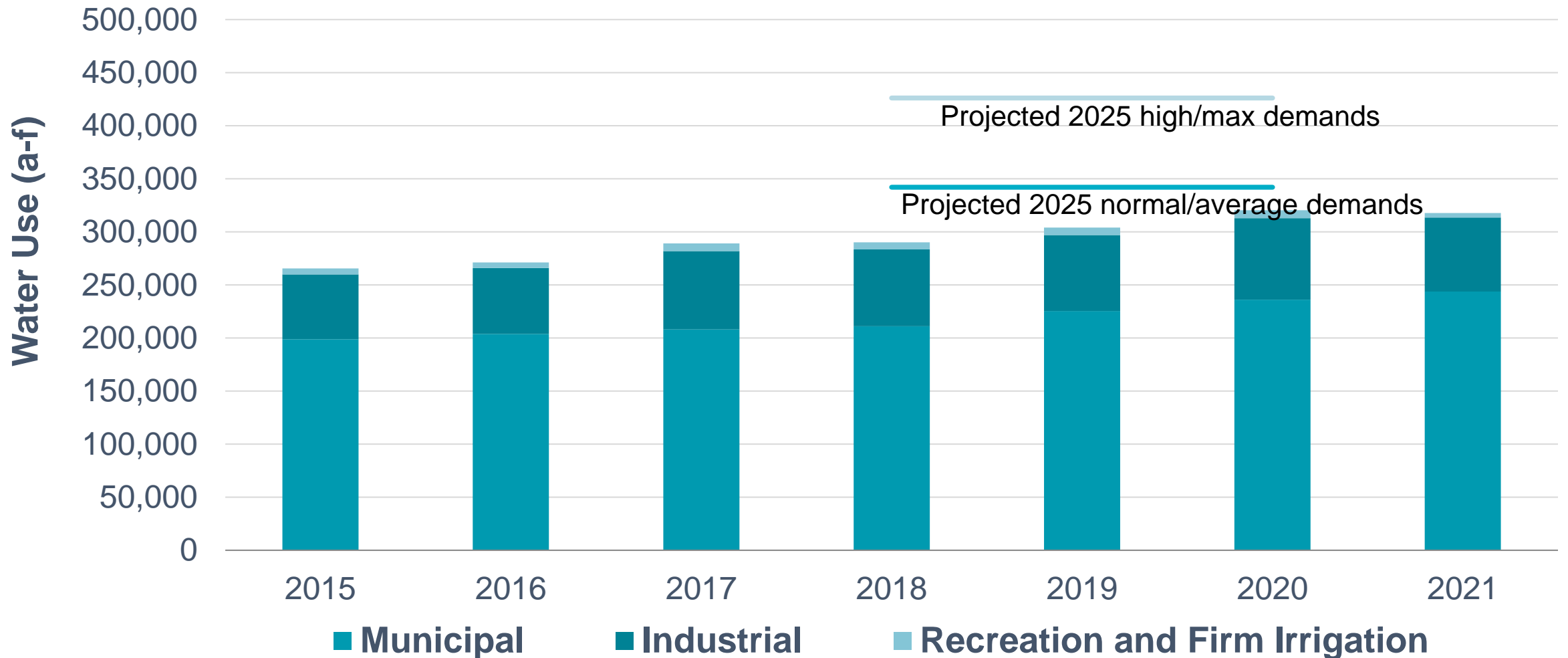
Lake Travis



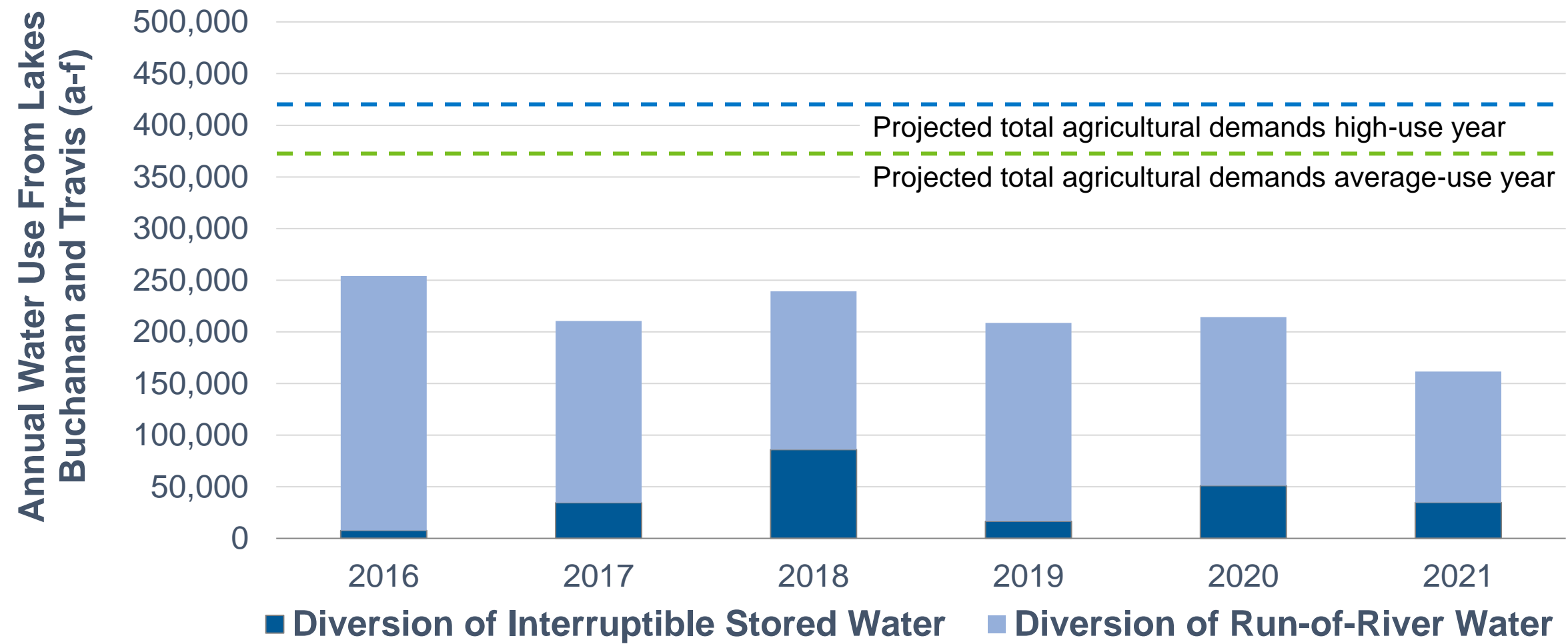
Water Management Plan



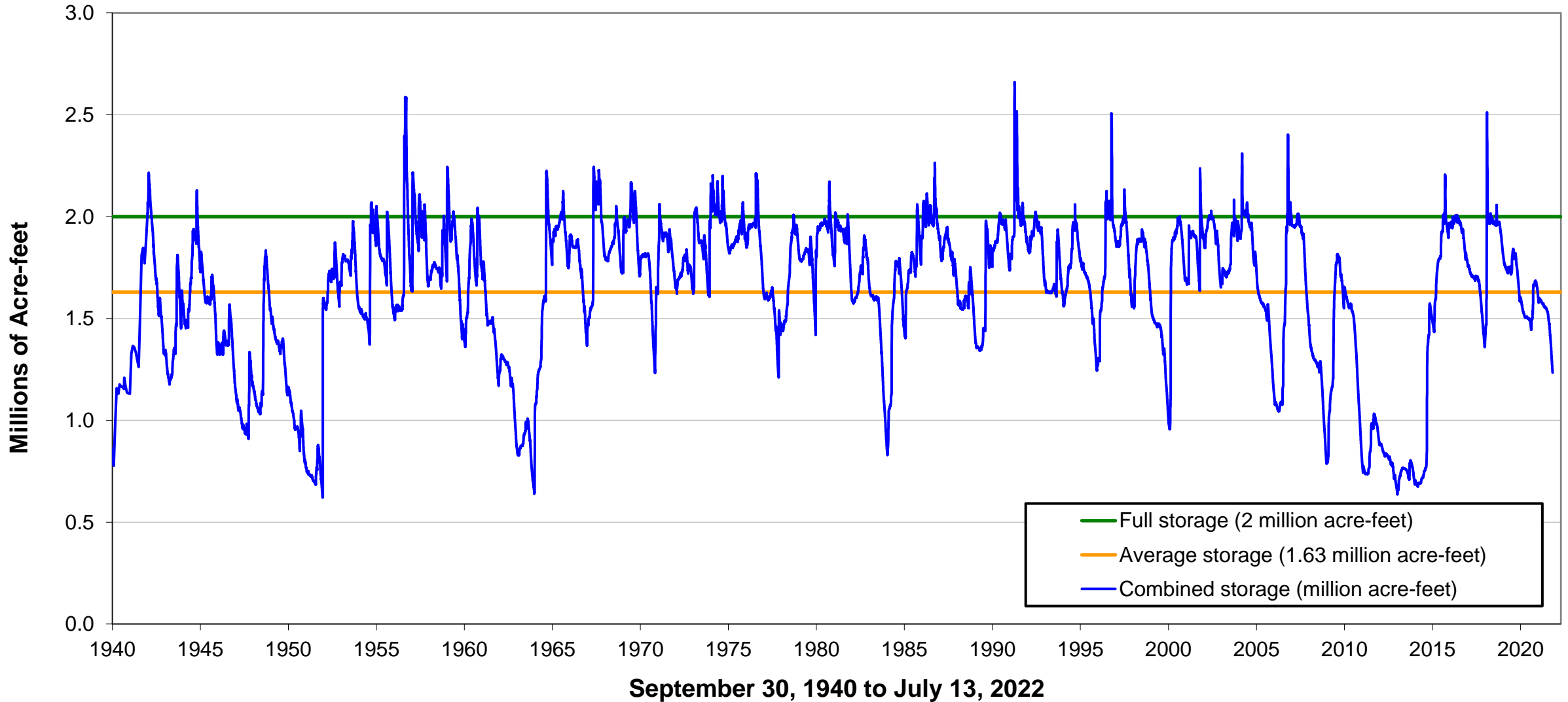
Municipal, Industrial, Recreation and Firm Irrigation Use From Lakes Buchanan and Travis and Colorado River



Use of Interruptible Stored Water and Run-of-River at the Four Downstream Agricultural Operations



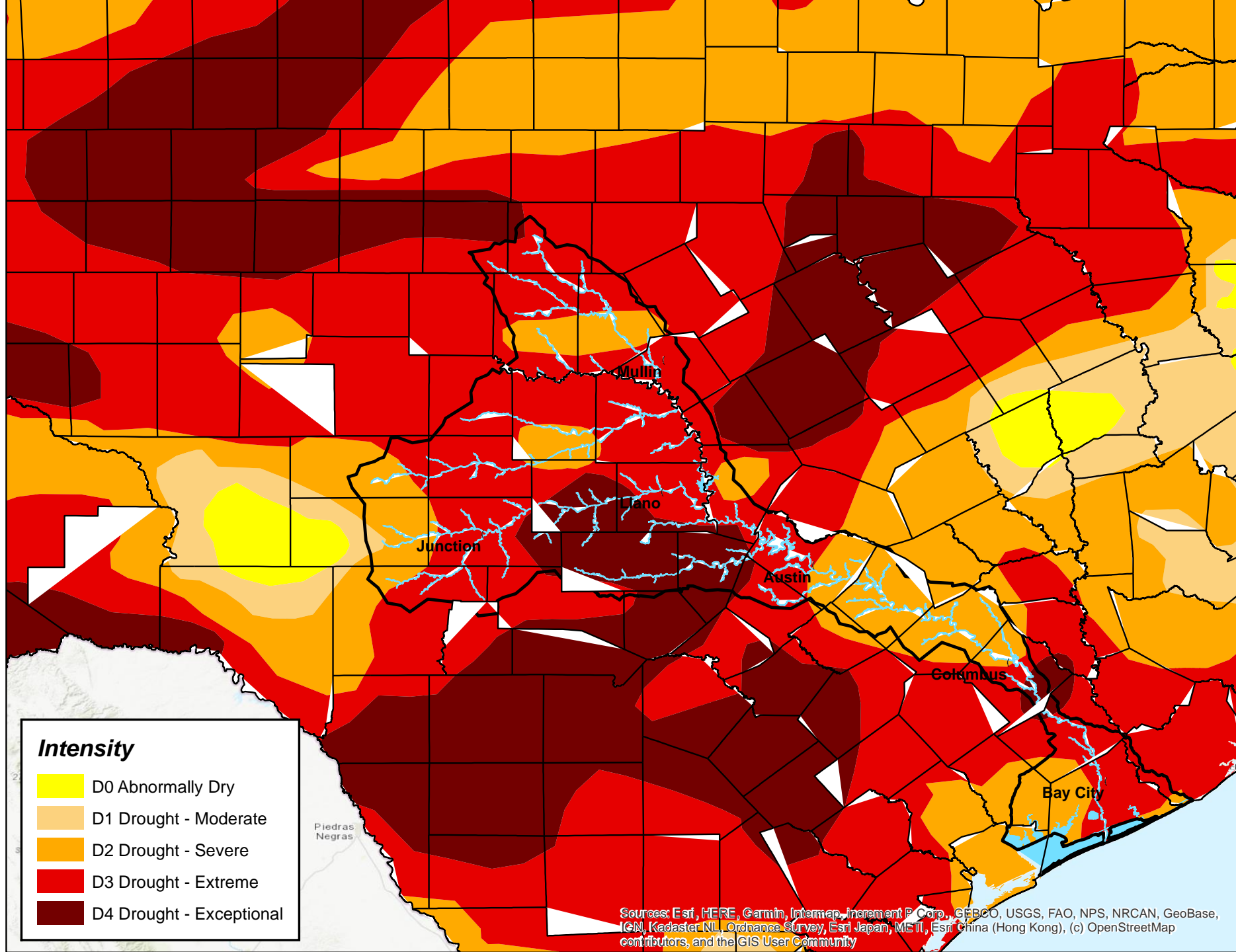
Total Combined Storage - Lakes Buchanan and Travis



U.S. Drought Monitor

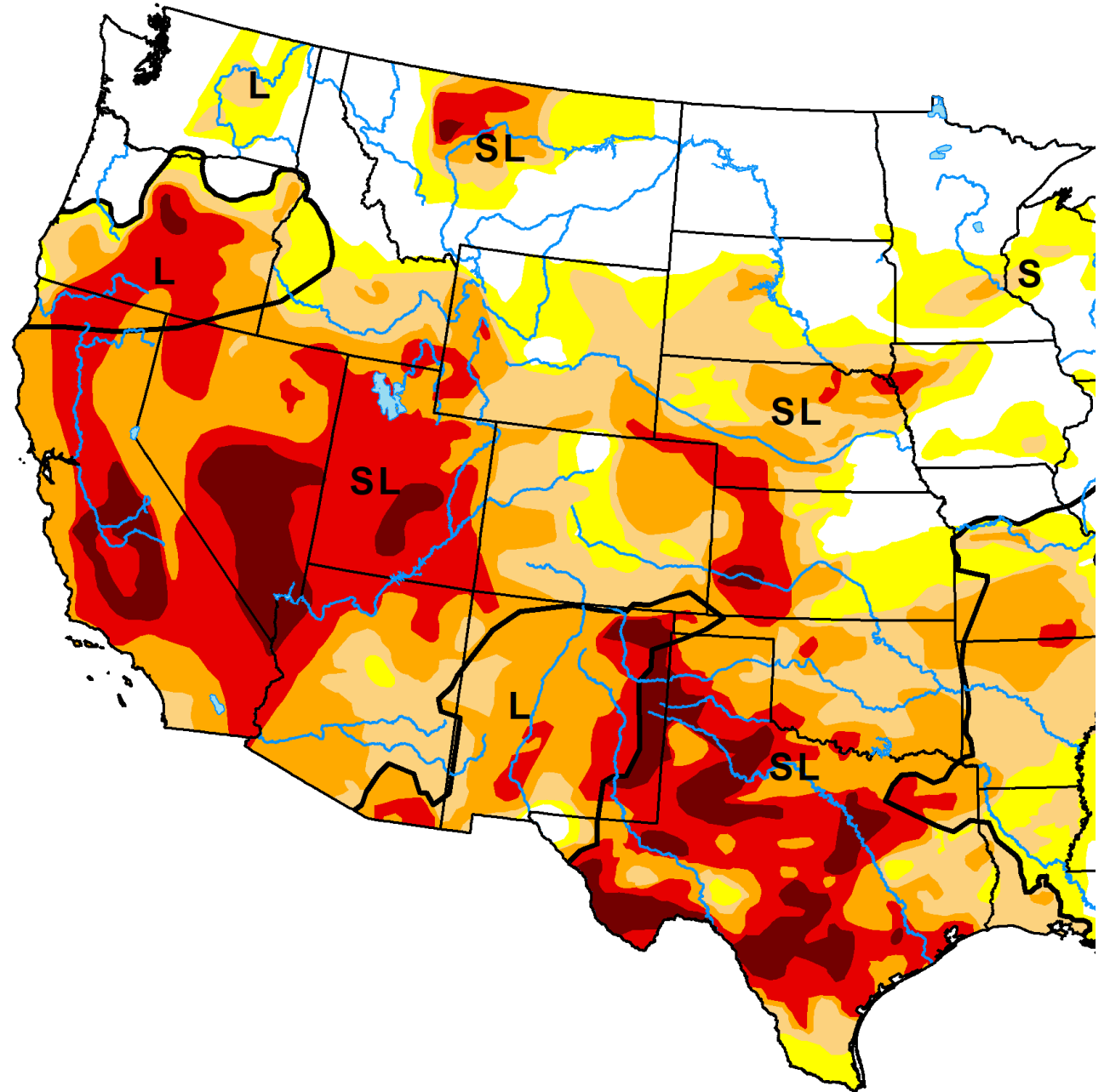
Lower Colorado River Basin

As of July 19, 2022

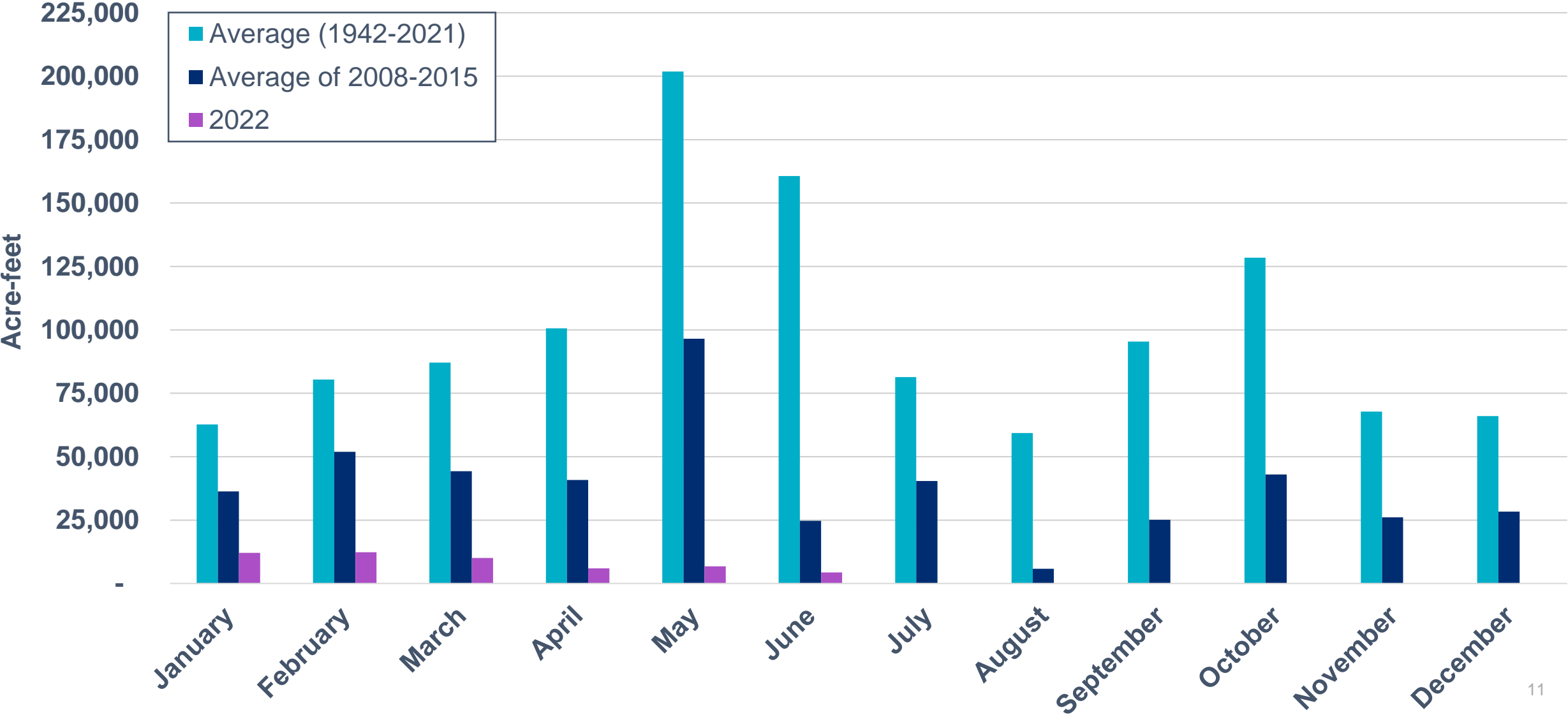


U.S. Drought Monitor

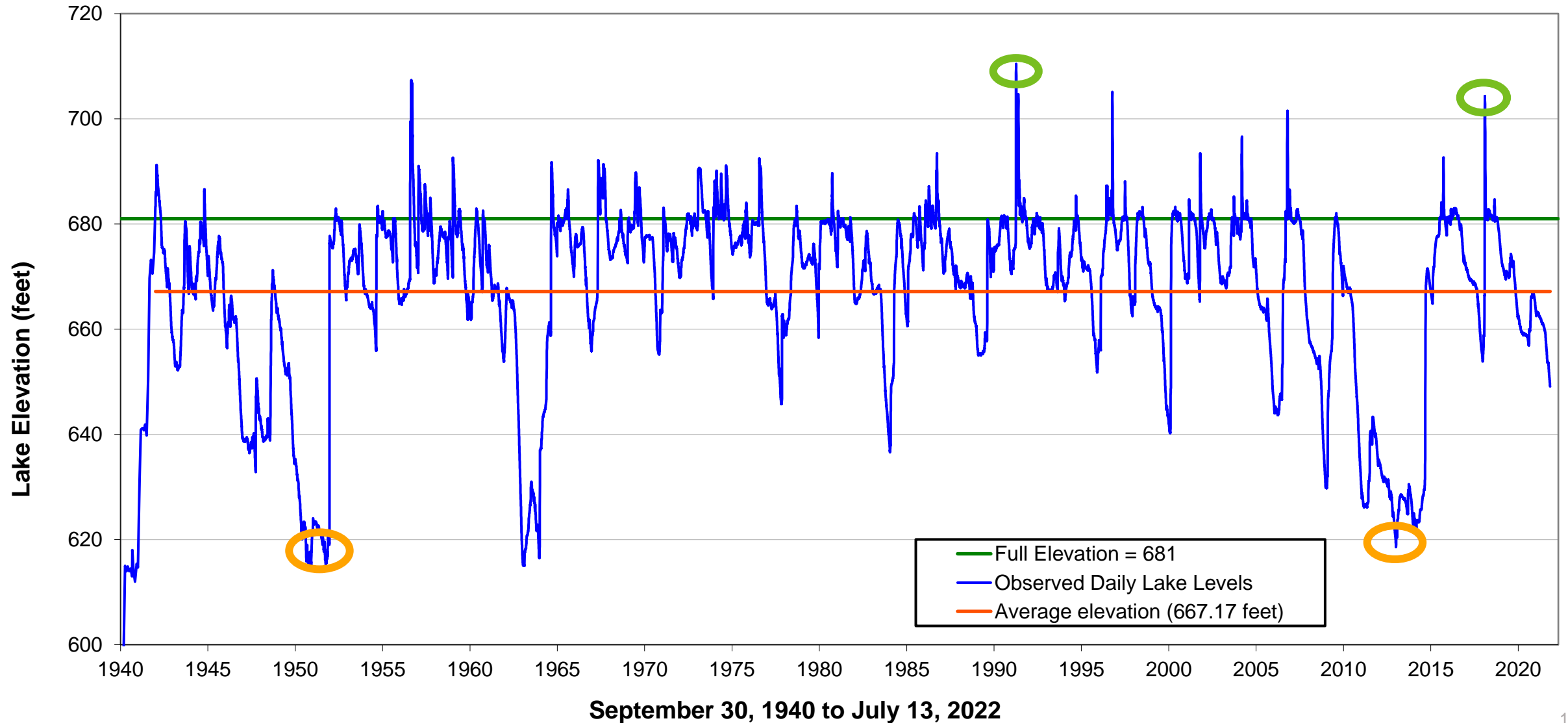
July 19, 2022



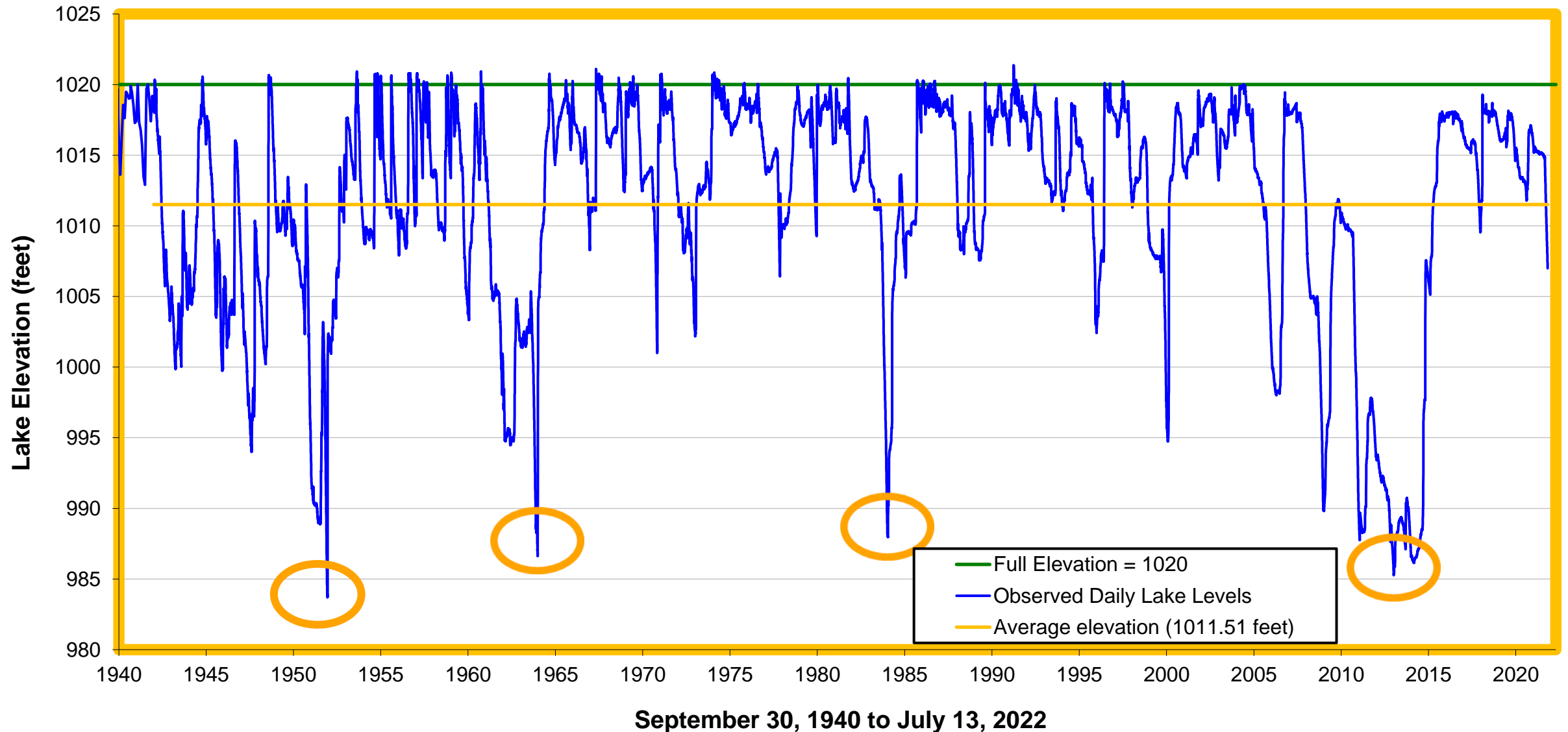
Water Flowing Into Lakes Buchanan and Travis



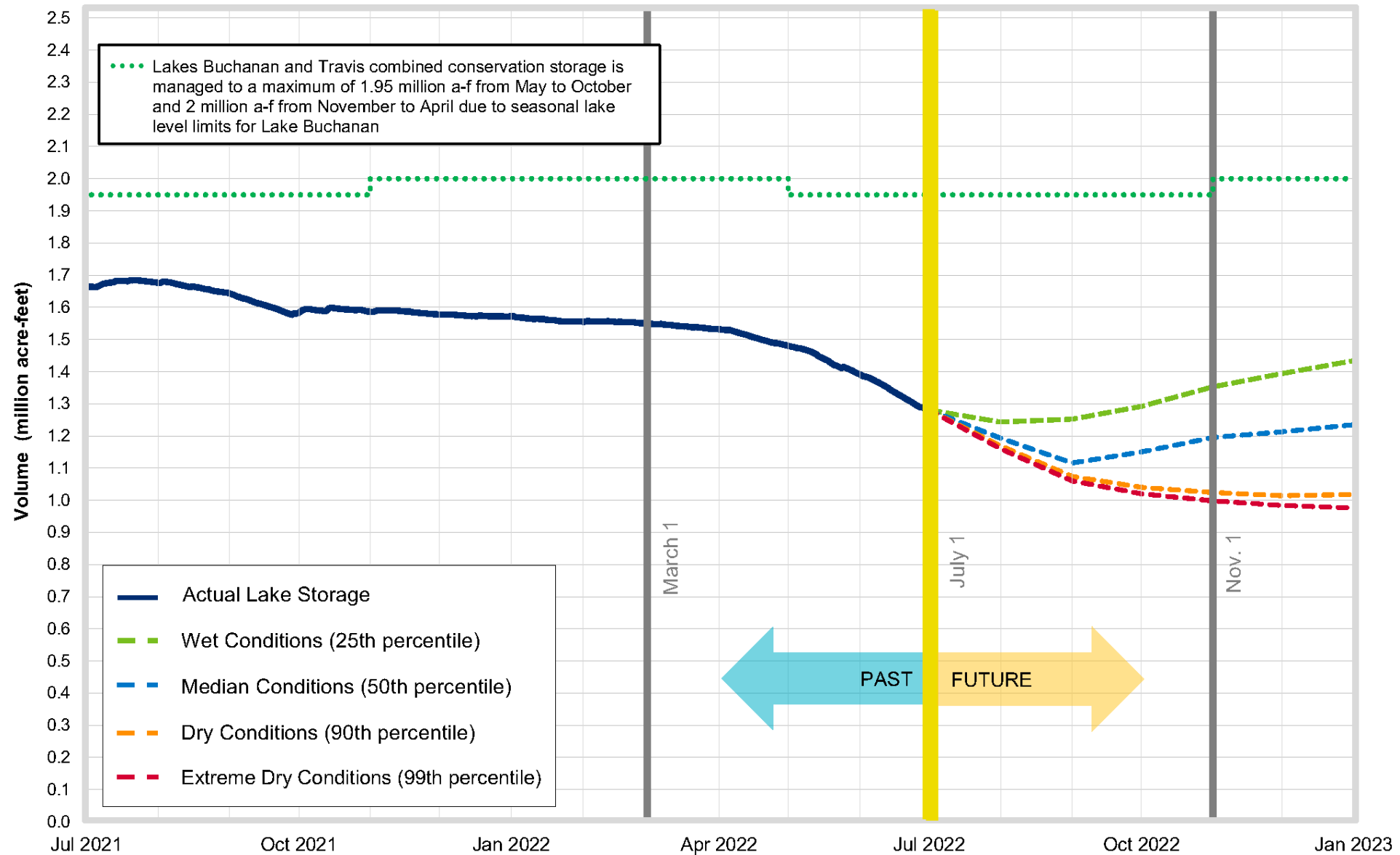
Lake Travis Daily Elevations



Lake Buchanan Daily Elevations



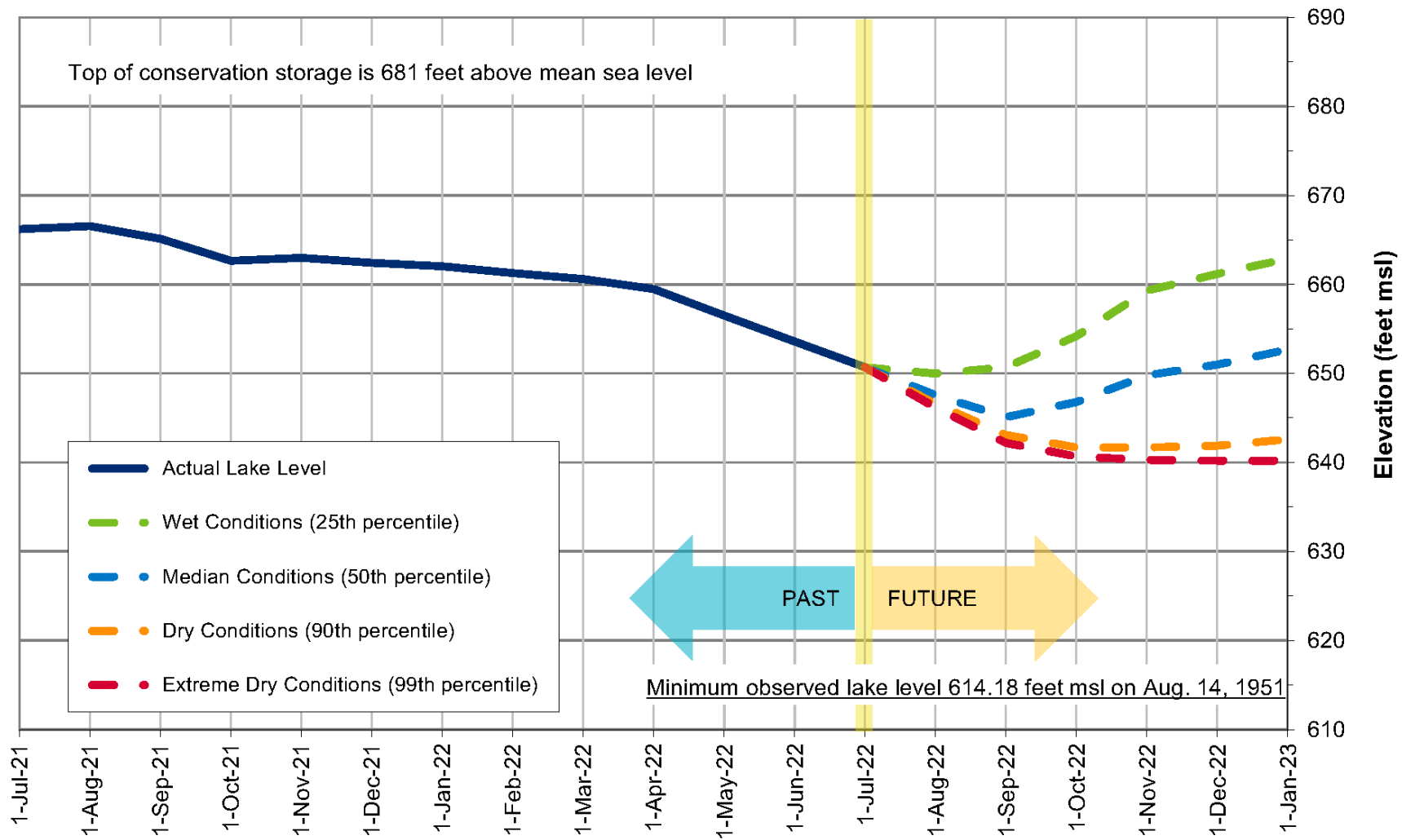
Lakes Buchanan and Travis Total Combined Storage Projections



Date: July 1, 2022

Note: One acre-foot equals 325,851 gallons

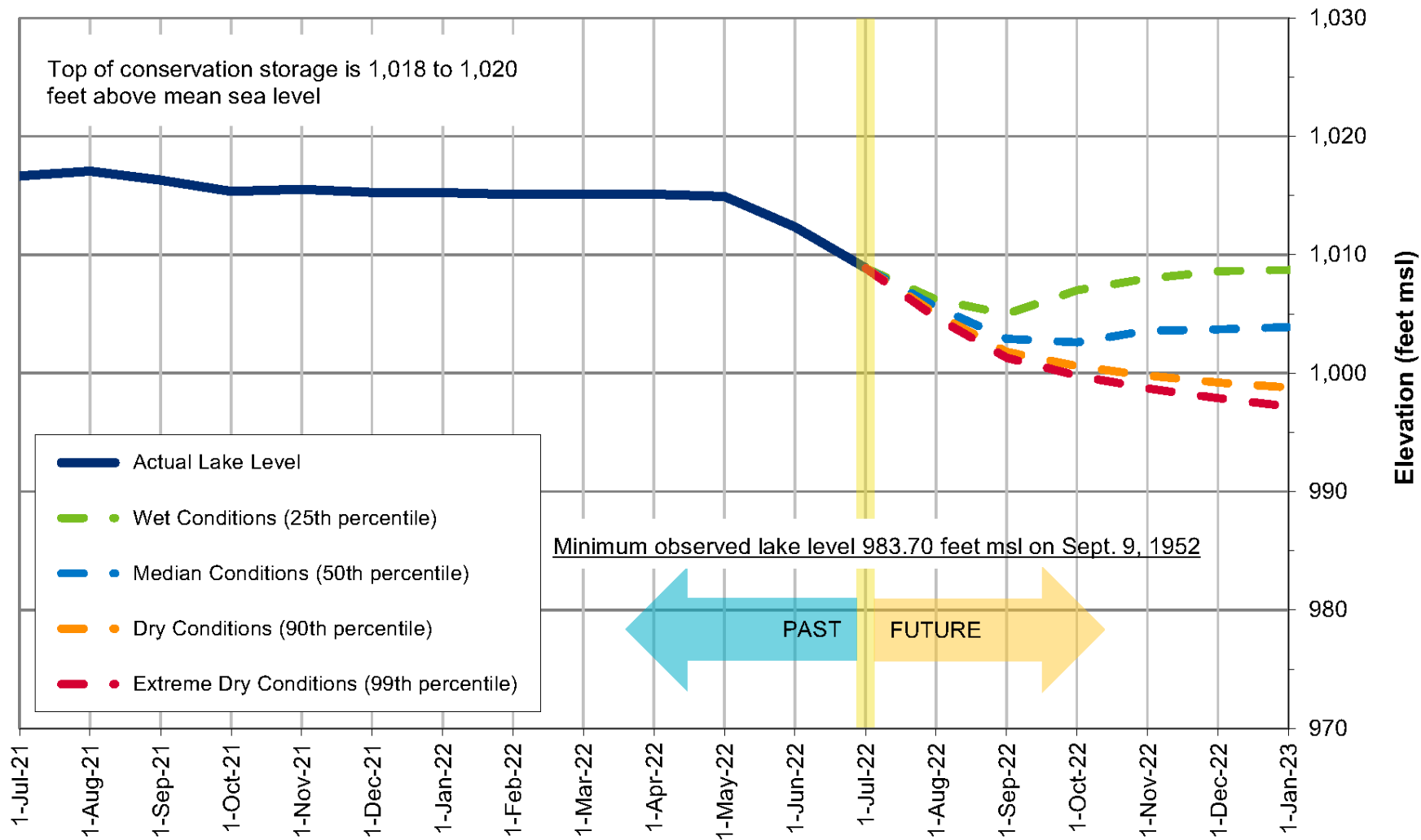
Lake Travis Level Projection*



**Average for July:
667.38 feet msl**

**Historic low (1951):
614.18 feet msl**

Lake Buchanan Level Projection*



**Average for July:
1,012.72 feet msl**

**Historic low (1952):
983.7 feet msl**

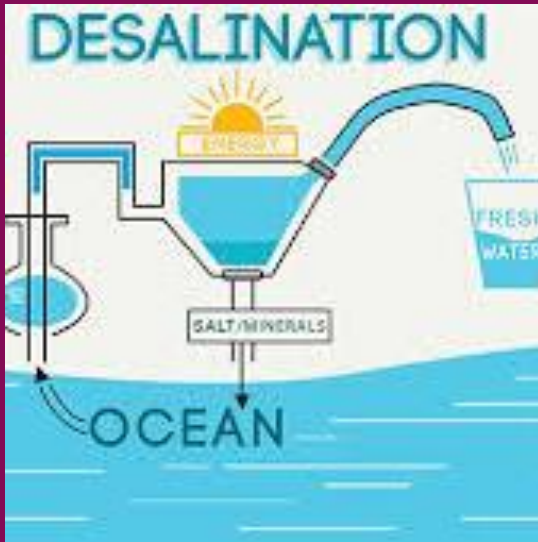
Planning for Future Water Demand

LCRA Water Supply Projects ¹ 50-Year Horizon		Estimated Supply (acre-feet per year)
Ongoing		
Municipal water conservation programs		Up to 15,000
Agricultural water conservation programs		To be determined (interruptible supply)
Construction Phase		
Arbuckle Reservoir		Up to 90,000
Engineering/Design/Permitting Phase		
Griffith League Ranch groundwater		Up to 25,000
Import water from Williamson County		Up to 35,000
Planning/Future Development/Feasibility Phase		
Amend run-of-river water rights to add upstream diversion locations and/or storage		Improved efficiency
Midbasin off-channel reservoir		Up to 20,000

¹ Implementation or planning phase.
Project implementation order may affect supplies created by subsequent projects, therefore the values in the Estimated Supply column should not be summed at the full project amount.

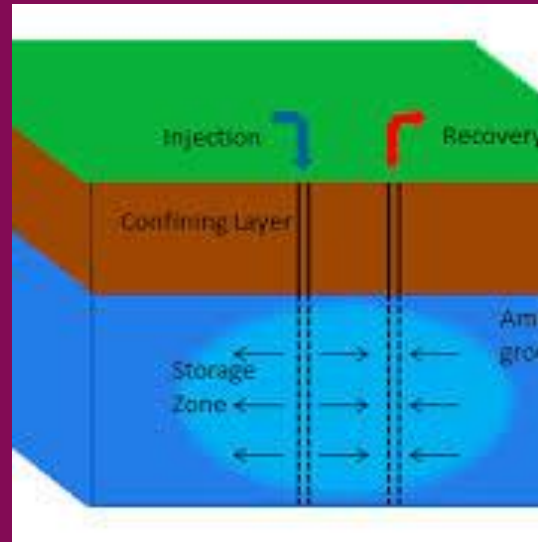
² Alternative strategy in 2021 Region K Water Plan

Additional Strategies



Desalination

Brackish and Gulf
seawater



Aquifer Storage

Aquifer storage and
recovery with
off-channel reservoir



Groundwater

Additional
conjunctive use



Importation

Future opportunities
to partner

Water Conservation Programs

- **Raw Water Conservation Plan approved by LCRA Board in 2019**
 - Includes municipal, industrial and agricultural five- and 10-year conservation goals
- **Firm Water Conservation Cost-Share Grants**
 - Provides funding for large-scale water efficiency projects
- **Water Smart Program for end users**
 - Provides rebates for irrigation system evaluations, irrigation system equipment, soil testing, pool covers and more
 - www.WaterSmart.org

Current Condition: Serious Drought

- Conservative planning
- Water Management Plan required cut off interruptible water supply for second growing season
- Some water will continue to be released downstream
- Drinking water is in good shape



Current Condition: Serious Drought

- Key takeaway: Reservoirs are doing what they are designed to do



