

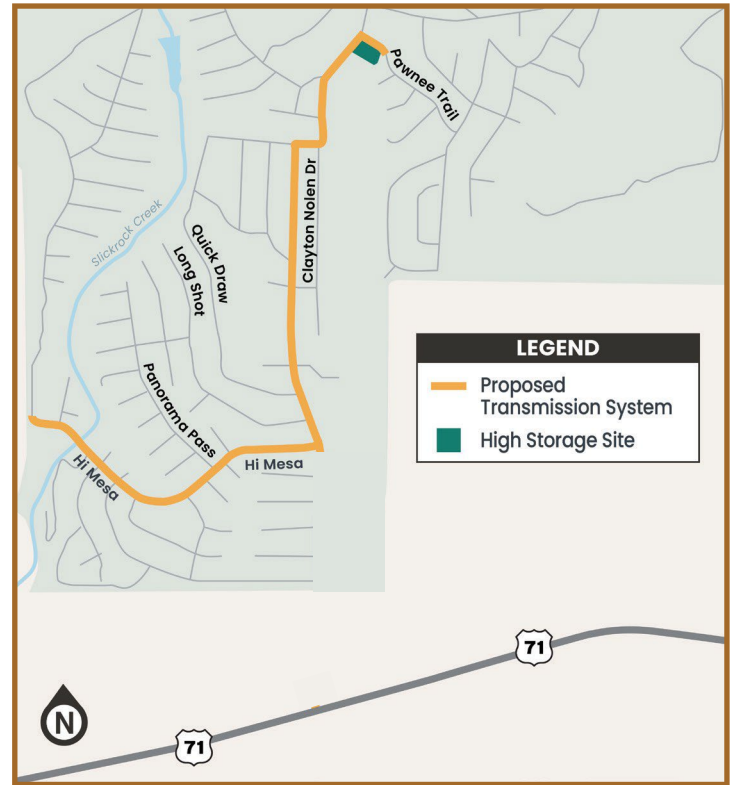
Horseshoe Bay

TEXAS

THE CITY OF HORSESHOE BAY HIGH-ZONE TRANSMISSION MAIN

The City of Horseshoe Bay's new High-Zone Transmission Main will stretch from the City's High Storage Site located at Clayton Nolen Drive and Pawnee Trail, up to Hi Mesa. In 2023, the City identified the need to increase the capacity of water available for use from the City's Summit Rock elevated storage tank. This addition will improve the reliability of the City's west water system in phase one and support additional growth.

The High-Zone Transmission Main is a pipeline that will be used in our water distribution system to transport water from Central Low-Zone to the Summit Rock Elevated Storage Tank.



Project Timeline

Design is underway and anticipated to be completed in late 2024. Construction could begin as early as 2025. To reduce impacts to the community, construction is planned to occur in two phases:

PHASE 1

Construction of the transmission main from the City's High Storage Site at Clayton Nolen Drive and Pawnee Trail to just west of the Slick Rock Creek crossing.

PHASE 2

Construction of the transmission main along Clayton Nolen Drive down to Hi Mesa.

Additional details on construction will be available as project development progresses.

Contact Information

For any questions regarding the High-Zone Transmission Main, please contact:

Corrie Everett, Compliance and Regulatory Administrator

☎ 830-598-9983

✉ ceverett@horseshoe-bay-tx.gov

